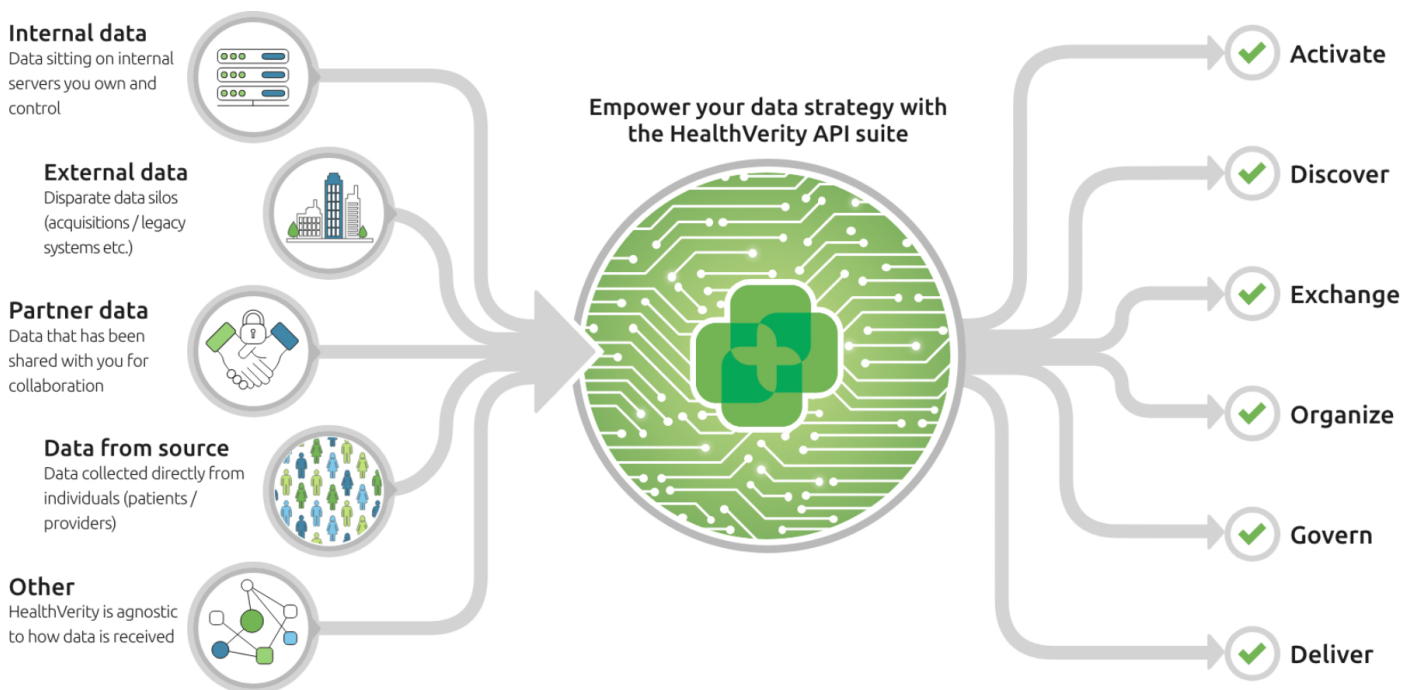


Introducing the powerful new HealthVerity API suite

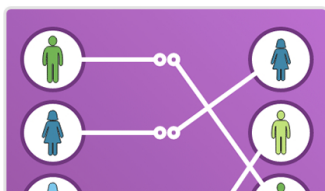
The challenges and needs of your business are constantly evolving and your data strategy needs to be equally as nimble. Traditional off-the-shelf products built for data licensing and management are no longer relevant to today's modern enterprises requiring sophisticated, real-time technologies to implement on-demand solutions.

HealthVerity has revolutionized its core technologies and expanded its offerings to exist as a suite of APIs for our partners to use, build upon and execute at their convenience. With HealthVerity technologies directly embedded into the enterprise workflow and the largest, most flexible data ecosystem at their fingertips, our partners now benefit from cloud-based APIs built to simplify how PII is deidentified, customer consent is managed, data governance and HIPAA-compliance is secured and much more.



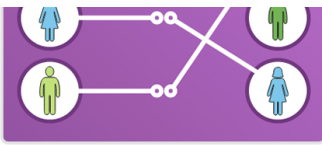
Over the coming months, you will see the introduction of additional APIs and cloud services to support a host of data management needs unique to the highly governed world of the healthcare industry.

We invite you to explore some of the highlighted APIs below.



Identity

Census APIs support the deidentification process that is your key to maintaining HIPAA compliance. Today, you serve patients and have their personally identifiable information (PII) such as name, address and birthdate. But to use this data for other business purposes such as research, drug studies or physician marketing, you need to

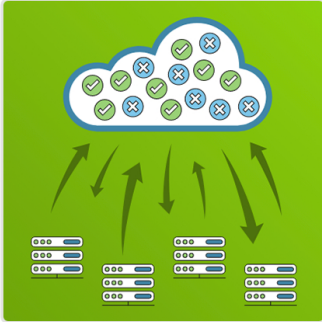


deidentify this data. Census supports this process by converting a patient's PII to an HVID, a type of token that represents an individual, is unique to your organization, yet still supports data interoperability when required."

Why is interoperability important? It is not uncommon that valuable patient data needs to be assembled from different sources. Yet each data stream needs to be kept separate when there is identifiable data, differing data ownership and governance requirements. If the goal is to follow a patient journey, or combine different datasets for almost any research, deidentification with interoperability is critical. Additionally, your HVIDs will enable you to identify interoperable datasets from HealthVerity's Marketplace to augment your own data.

[Request a Demo](#)

[View Documentation](#)



Data rights

Consent APIs helps your organization manage and govern consumer data-use permissions across internal systems and external suppliers to ensure compliance to privacy law.

Your customers change their consent preferences through multiple touch points making it difficult to understand and respond to their needs. By centrally managing opt-in and opt-out preferences collected across many applications in your multi-supplier network, HealthVerity Consent consolidates permissions and acts as the single source of truth.

Consent APIs provide greater flexibility for organizations to integrate with their existing systems in real-time. Web forms that capture consent can publish new opt-in/opt-out preferences to Consent API on-demand. Systems that master customer identity can provide updates to Consent API so that preferences remain in sync with the customer throughout the organization. Finally, Consent API pushes updates to downstream systems like CRMs so that they are always in sync.

[Request a Demo](#)

[View Documentation](#)



Search

The Discovery API gives you access to HealthVerity Marketplace summary data so that you can build your own solutions that require patient or provider counts from our vast library of healthcare data and service providers.

With this API, you can integrate Marketplace counts into queries that include your private data. This is useful to help identify data sources to assemble patient cohorts or other research projects. For example, if you are looking to determine which of our data sources has patients that meet criteria such as gender, BMI, age, or location, these are the APIs you'll want to integrate into your internal search tools.

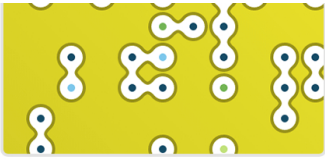
[Request a Demo](#)

[View Documentation](#)



Reference

HealthVerity offers ten different APIs to deliver the reference data you need to build your own search tools. This data includes LOINC codes, biomarkers, ICD10, HCPCS/CPT codes and more. You can use this data to populate search lists, validate data entry and other functions needed to support your user's searches.



[Request a Demo](#)

[View Documentation](#)