

# The largest healthcare and consumer data ecosystem in the US

Access real-world data to solve healthcare's biggest challenges. The HealthVerity data ecosystem encompasses **over 150 billion** healthcare and consumer transactions from **more than 75** major data sources. Leverage the largest collection of traditional and novel datasets to pursue patient journey mapping, clinical trial optimization, adherence research, pregnancy health research, cost of care and much more.

## Billions of medical transactions at your fingertips



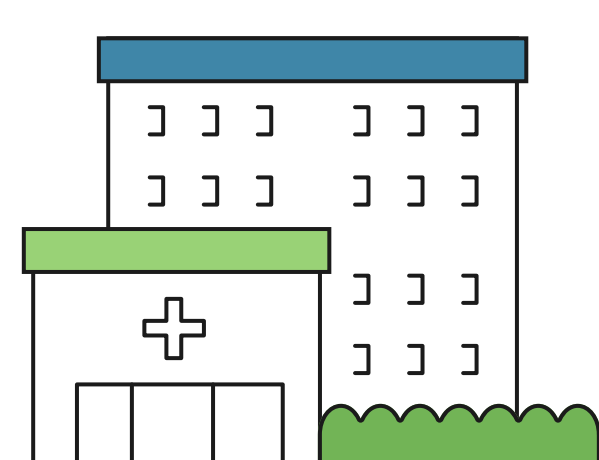
### Closed payer claims

Largest collection of provider-identifiable closed payer claims.  
190m+ patients from 150+ unique payers.  
Includes Commercial, Medicare Advantage, Managed Medicaid.



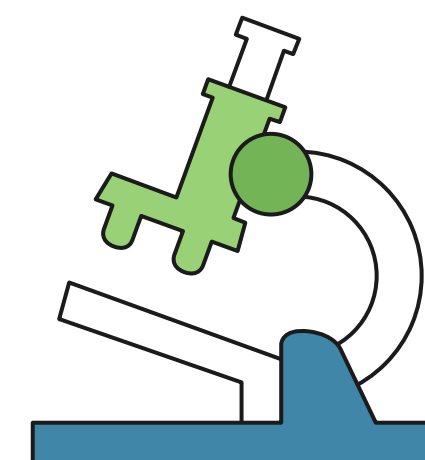
### EMR

Largest collection in the US



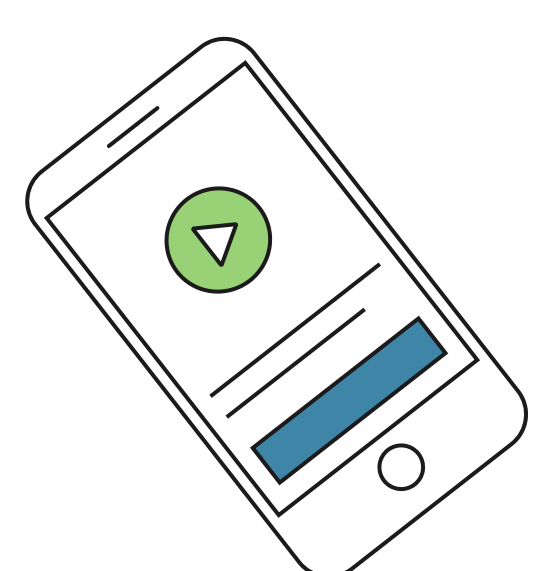
### Hospital chargemaster

Largest collection in the US

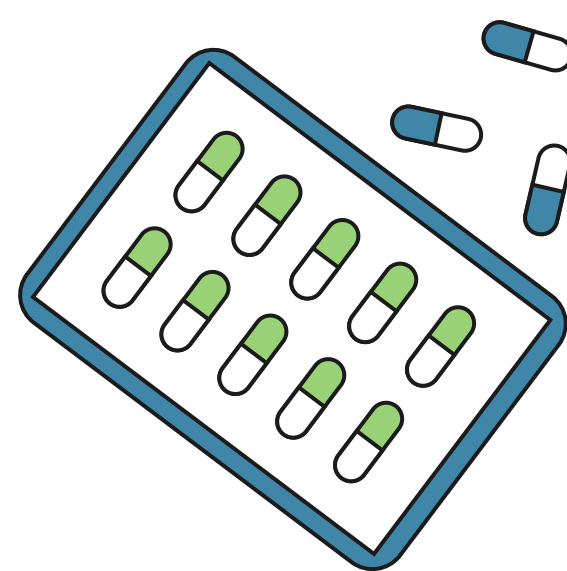


### Lab results (Includes NPI)

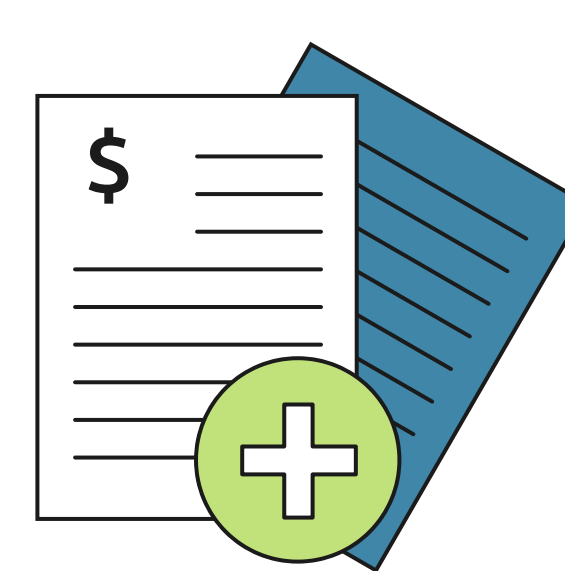
Largest collection in the US



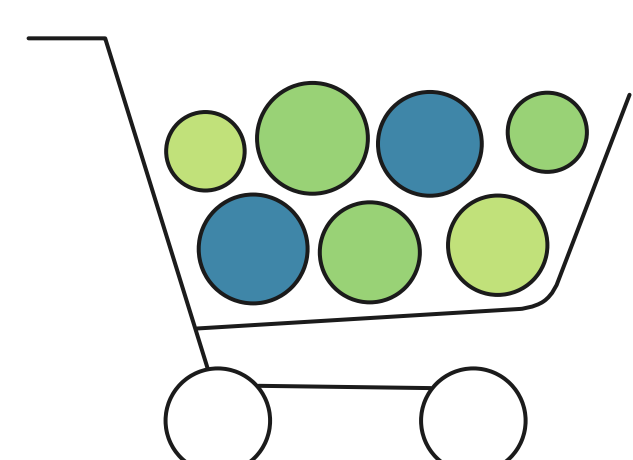
### Media data link



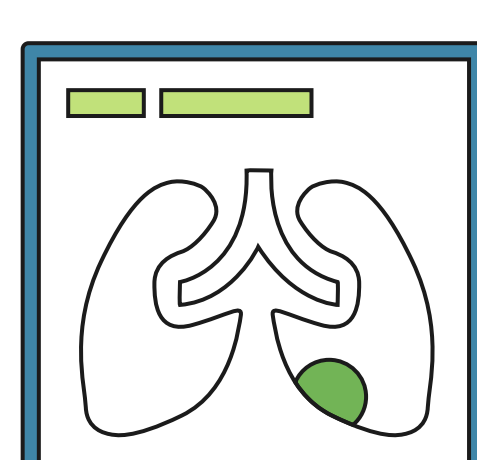
### Pharmacy claims



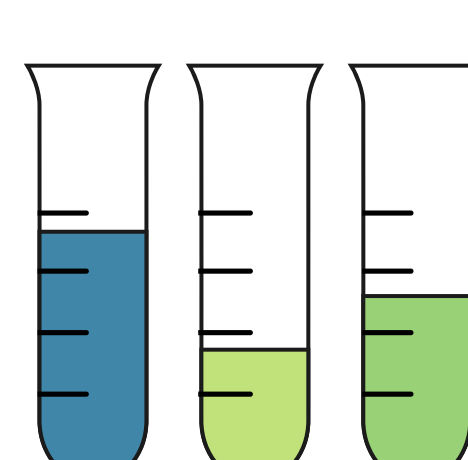
### Medical claims



### Grocery and consumer



### Imaging



### Biospecimens

## Key advantages

- ✓ **Unmatched volume**  
Access the largest collections of closed payer claims, EMR, chargemaster and lab results data.
- ✓ **HIPAA compliance**  
Combine de-identified, interoperable datasets to build custom and novel intersections.
- ✓ **Your data + third-party data**  
Enable the universal HealthVerity ID token (HVID) to enrich your existing data with more than 150 billion healthcare transactions.
- ✓ **Data transparency**  
Leverage transaction-level data to run analytics on your platform of choice.

# 330m

Patients

# 150b

Patient transactions

# 75+

Unique datasets



## Easily Overlay Your Own Data in HealthVerity Marketplace

Instantly overlay the data you already have with the HealthVerity Marketplace ecosystem of 330 million unique patients to strengthen and enrich your data services. Multiple tiles can be created and accessed by individual teams, customers, or designations within and beyond your enterprise.



## Comprehensive search criteria include:

- ✓ **Disease category** (ICD codes)
- ✓ **Procedure Code** (CPT)
- ✓ **Lab** (LOINC)
- ✓ **Demographics** (age, gender, etc)

HealthVerity supports searching against ICD9, ICD10, NDC, CPT, HCPCS, LOINC, and ICD10 procedure codes. The search bar also allows for common names of diagnosis, diseases, procedures, or drugs.

## Simplify Process and Speed Access to Research-Ready Data

Working with HealthVerity means the simplicity of one vendor, one contract, and data normalized into one master dataset.

## About HealthVerity

Pharmaceutical manufacturers, payers, and government organizations have partnered with HealthVerity to solve some of their most complicated use cases through transformative technologies and real-world data infrastructure. The HealthVerity IPGE platform, based on the foundational elements of Identity, Privacy, Governance, and Exchange, enables the discovery of real-world data across the broadest healthcare data ecosystem, the building of more complete and accurate patient journeys and the ability to power best-in-class analytics and applications with flexibility and ease. Together with our partners, HealthVerity has built the modern way to data for the health insights economy.