

See you later, aggregator

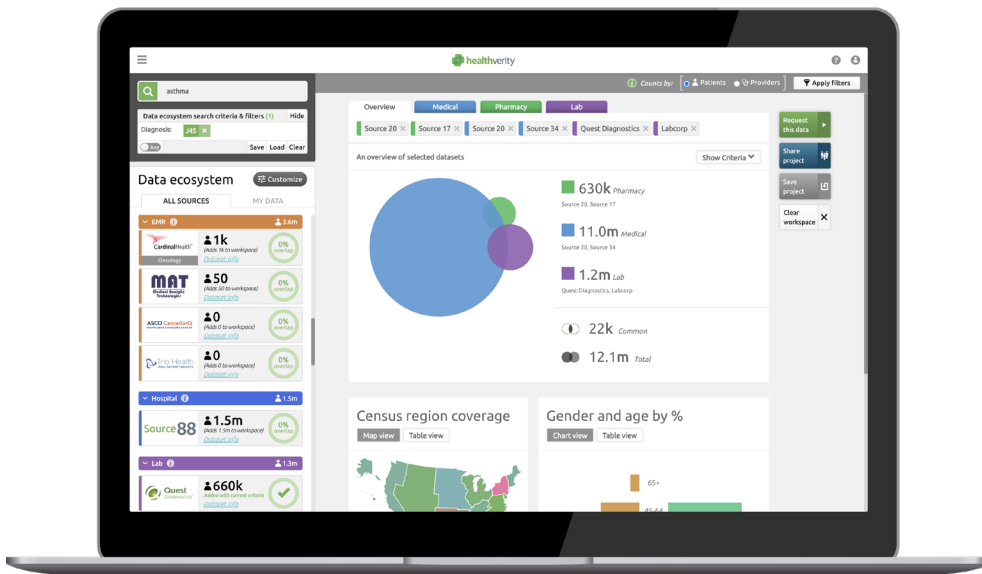


Advance the science with research-ready RWD

Real-world data (RWD) can yield insights that accelerate clinical research; however, the exchange of this patient data, especially from disparate sources, can be overly complex and inefficient. You need a synchronized solution to seamlessly discover and license meaningful RWD that is fully interoperable, with patient identity accurately resolved, privacy protected and normalized in a common data model for analysis.

Journeys for hundreds of millions of patients starts here

As the industry's first RWD marketplace, HealthVerity remains your best choice for the seamless exchange of transaction-level, fully interoperable, privacy-protected data to advance the science. HealthVerity Marketplace, a cloud-based data discovery solution, allows you to explore the most novel RWD sources, build custom cohorts and instantly see patient counts and data provider overlaps in real time, licensing only what you need.



KEY BENEFITS:



HIPAA compliant and research ready from day one



The most novel and diverse data sources covered by one contract



Data provenance across all sources



Patient-level transactional data for greater insights



Data delivered when and where you need it to run your own analytics

Real-time insights into data feasibility

Readily find the RWD you need for your research and analytics projects with the nation's largest healthcare and consumer data ecosystem. HealthVerity Marketplace allows you to build custom cohorts based on expansive healthcare criteria, such as diagnosis, drug, procedure, lab test or biomarker. By combining data types, you can see where there is an overlap of patients in real time so you can determine what datasets best meet your specific needs.

Calling all data

Seamlessly overlay your proprietary enterprise data across the universe of RWD in HealthVerity Marketplace, enriching your current datasets, enabling you to spot gaps in the patient journey and helping to avoid licensing of duplicative data. Your proprietary datasets are accessible and viewable only by you and designated team members.

License only what you need

Once you've discovered patients of interest, you can easily license only the data you need from multiple sources with a single contract and pricing that meets your budget. We handle all of the data provider contracting so you can focus on what really matters—conducting innovative research that changes lives. We deliver transaction-level, fully interoperable, research-ready data directly to the environment of your choice for immediate use, accelerating your research.



LEARN MORE

For more information about HealthVerity Marketplace™, email info@healthverity.com or visit healthverity.com/marketplace/healthverity-marketplace

Sync big



Unrivaled volume: Explore the largest ecosystem of open and closed payer claims, electronic medical records, chargemaster and lab data



Research ready: Synchronize de-identified, HIPAA-compliant, interoperable datasets to build custom and novel intersections



Synchronize with your data: Enable the universal HealthVerity ID to enrich your existing data with more than 200 billion healthcare and consumer transactions



Data transparency: Leverage transaction-level data to run analytics fit for your purpose in the environment of your choice